

Volume 29: Issue 3
July, 2018



LINES & POINTS

www.plsw.org



THE EQUALITY STATE SURVEYOR
PROFESSIONAL LAND SURVEYORS OF WYOMING

Hixon Mfg. & Supply Co.

Introducing the world's fastest and easiest-to-use GNSS RTK rover, the Leica GS18 T. Now you can measure any point faster and easier without the need to hold the pole vertical. This latest innovation combines GNSS and inertial measurement unit (IMU) being the first true tilt compensation solution that is immune to magnetic disturbances and is calibration-free. Save up to 20 percent over conventional surveying practices, measure where others can't, faster than ever before and forget the bubble.

Leica GS18 T
World's Fastest
GNSS RTK Rover



Call 800.762.5252 today for additional information and to schedule a demo

JUST SOME OF OUR MANY VENDORS:



built to
transform



Leica Rugby CLA/CLH
First Upgradable Lasers

Call for details

Leica
Geosystems

NEW



FORT COLLINS
1001 SMITHFIELD DR
FORT COLLINS, CO 80524
970.482.0111 800.762.5252

www.hixonmfg.com



DENVER
8775 E ORCHARD RD, #807
GREENWOOD VILLAGE, CO 80111
303.694.0012 800.475.3422





President • Geno Ferrero, PLS

President Elect • Lyle Casciato, PLS

Secretary/Treasurer • John "Jack" Studley, PLS



• Cotton Jones, PLS
Area Director



• Mark Corbridge, PLS
Wyoming Delegate

PUBLICATIONS COMMITTEE

Committee Chair • Steven "Dennis" Dawson, PLS
dennieandbarb@gmail.com

Editor in Chief • Michael Flaim, PELS
mike.flaim@bresnan.net

Treasurer & Advertising • John "Jack" Studley, PLS
jklz0318@gmail.com

Circulation • Joel Ebner, PLS
jebner@blm.gov

Copy Editor • Herbert W. Stoughton, PhD, PELS, CP
hws.geod.engr@gmail.com

Website • Sonja "Suzie" Sparks, PLS
sasparks7@gmail.com

Emeritus Member • Pete Hutchison, PELS
petehpels@gmail.com

Emeritus Member • Larry Perry, PLS
arpentator@yahoo.com



On The Cover

WYOMING/S. DAKOTA-
NEBRASKA STATE CORNER
MONUMENT
BY JOEL EBNER

CONTENTS

Page 3 • PRESIDENT'S MESSAGE

Page 5 • ANNOUNCEMENTS

Page 11 • WYOMING / SOUTH DAKOTA-
NEBRASKA
COMMON CORNER REDEDICATION

LLYOYD BAKER (1911-2018)

Page 17 • WYOMING SURVEYOR DIES AT 107
By: Bryan Clark

Page 18 • WYOMING MAN DRIVES TO 104TH
BIRTHDAY PARTY
By: Michael H. O'Donnell

2018 PLSW SUSTAINING MEMBERS

- Jenn Heinrich - Frontier Precision Inc.
- John Baffert - Surv-KAP, LLC
- Chris Farnsworth - RDO Integrated Controls
- Kelly Goff - Underground Consulting Solutions
- Susan Hall - Trimble
- Tim Klaben - Berntsen International Inc.
- Troy Langston - Monsen Engineering

Advertising Information

Digital-ready, full-color advertising with payment should be mailed to Lines & Points, P.O. Box 8, Cheyenne, WY 82003.

Advertising rates are as follows:	Year	Issue
Full Page	\$810	\$210
Half Page	\$540	\$140
Quarter Page	\$310	\$80
Business Card	\$40	\$10
Employment	Free	Free

Special Rates apply for PLSW Chapters and cover placements.

For more information please contact Jack Studley.

PLSW (Professional Land Surveyors of Wyoming; PO Box 8, Cheyenne, WY 82003) is a statewide organization of Land Surveyors registered to practice in the Equality State of Wyoming. PLSW is dedicated to improving the technical, legal, and business aspects of surveying in the State of Wyoming. PLSW is affiliated with the National Society of Professional Surveyors (NSPS) and the Western Federation of Professional Land Surveyors (WestFed).

Lines and Points is published by the Professional Land Surveyors of Wyoming. Lines and Points is not copyrighted and permission is hereby granted to reprint articles with appropriate credit. The Professional Land Surveyors of Wyoming assume no responsibility for statements made or opinions expressed in this publication. The articles and opinions as put forth in this journal are not necessarily those of PLSW or the Editorial staff of this journal.

PRESIDENT'S MESSAGE

Whom do you work for?

This is a question that I address constantly during the construction season, especially as we gear up and expand crews with summer hires. The answer can range from simple to complex, but it usually is never the name on the door of the survey truck.

Anyone with more than one week of field experience knows the situation. You are on a construction site and someone comes over and asks if you can put in some other points "real quick". A subcontractor doesn't like the engineer's design and knows a better way to do things so he is requesting you to change your staking. While replacing the limits of construction the contractor just quickly asks you to move the points over a couple of feet to the edge of the cleared Right-of-Way. Do you make these changes? Have these changes been approved? Is someone trying to have you cover up a construction mistake? These situations happen and can be rather intimidating for new crew chiefs, summer hires, or anyone without prior experience on the project.

When working on projects, Professional Land Surveyors have our standards of practice; so in one aspect we are always working for the public as a whole, while also working for the company/person who executed the work order. It is those situation where we get conflicting direction during a project that I would like to address.

During construction projects it is common for an Engineer or Architect to be contracted as the owner's representative to ensure that during construction the best interests of the owner are being protected. Engineers also get contracted to perform construction management and inspection to ensure the project is being built in accordance to the engineered design. For these projects it is cut and dry that they are working for the project owner, protecting the design they paid for, while also keeping the protection of the public in mind as well.

Have you ever been hired as a professional land surveyor by the owner during the construction phase of a project? As licensed professionals should we also be hired by the owner to protect their best interest and the design?

I'm assuming that, like most projects I have been involved with, your contract is with the contractor and in-turn you are working for them during the project. This usually will not create conflicts as most contractors pride themselves on their professionalism, but what about those other contractors or shady field hands? These are conversations worth having with the survey crews under your direction as they likely will not have been privy to the signed contract and all of its details.



With the field crews often being the eyes and ears for the office, they are sometimes placed into ethical dilemmas in the field that they will have to address. What should they do if one of the contractors asks them to make a change to the design? What should they do if the contractor has decided to skimp on construction staking and the field crews determine that the project may not be constructed as designed? Should your crews stop work on the project due to unsafe conditions they are witnessing? Often times your field crews will be put in conflicting situations; so what should they do, after all you might be working for the contractor.

Hopefully these conversations make it from the field and back to the office where the project managers can address the situation. Every project manager is different and every conflict is unique and the resolution will depend upon the individual. Open discussion about these situations can ensure that all parties involved understand the issues and hopefully common ground can be sought for a solution. If not, there may be situations where contracts are terminated and you both move on in separate ways.

Small scale projects usually do not warrant these issues as construction survey requirements can be minimal; but there is a point at which the involvement of the surveyor becomes critical. Sometimes the design will dictate the increased surveyor involvement, other times it is the size and scope of the project. What I am discussing is not an across the board change in construction contracts, but a recognition of projects that would be better served if surveyors were contracted to work for the owner. Educating the owner to the advantages of hiring the Surveyors along with the Engineers as owner representatives will be different for each project and at times may not be needed at all.

It is my opinion that Surveyors would be better off being hired by the project owner and then coordinating with the contractors for construction staking needs for the entirety of the project. Having the owner coordinate with the surveyors to define a scope of work for the project will relieve the contractor from trying to reduce survey costs to a minimum while also ensuring a quality product. This could also reduce the conflicts that arise when a contractor wants to make modifications without change orders or proper notification; relieving the field crews of the dilemma of representing the contractor or the project. I feel this would help change the perception of our profession as a line item budget cost in a bid package to a profession that is there, along with the Architects and Engineers, to ensure that the project is completed properly.

Geno Ferrero, PLS
President, Professional Land Surveyors of Wyoming

ANNOUNCEMENTS

Topics

- * Disputes Between Adjoining Landowners *
- * Ownership Versus Possession *
- * Highways, Byways and Private Roads *

2018
P.L.S.W.

Technical Session

Where: Ramkota Inn Casper, WY
When: November 1st & 2nd
Speaker: Wendy Lathrop

LINES AND POINTS ARTICLE ROTATION SUBMISSION SCHEDULE BY CHAPTER

Responsible Chapter	First Call Date	Last Call Date	Publication Date
Southeast Chapter	THANK YOU!!	(SEE "COMMON CORNER REDEDICATION" IN THIS ISSUE)	
Laramie Valley Chapter	September 1	September 15	October 1, 2018
Upper Platte Chapter	December 1	December 15, 2018	January 1, 2019
Southwest Chapter	March 1	March 15	April 1, 2019
Northeast Chapter	June 1	June 15	July 1, 2019



Dear Surveying Colleague:

NCEES invites you to participate in an important survey about the content of the Fundamentals of Surveying (FS) exam. The results of this study will be used to update the specifications for the exam.

Participants will complete an online questionnaire about the fundamental knowledge required of a candidate with a bachelor of science degree in surveying to work in a manner that safeguards the public.

This content review survey is being sent to surveying practitioners, ABET-accredited surveying programs, and technical societies. The responses to this survey will be used to determine the content tested on the FS exam. A high rate of return on the survey will help ensure the validity of the resulting exam. All responses will be confidential.

If possible, please complete the survey today. It will take 20 to 30 minutes. **The survey will be live through August 20, 2018, and all surveys must be completed by this date.**

We also ask that you forward this email to surveying colleagues who may be interested in participating. NCEES requires a cross section of professionals—including licensed professional surveyors and academics teaching surveying courses—to complete the survey.

If you have any questions, please contact NCEES at FScontentreview@ncees.org. Thank you in advance for your time and assistance.

Sincerely,

Cheryl Warren, Ph.D., P.E.
NCEES Exam Development Engineer



JOB DESCRIPTION AND RESPONSIBILITIES

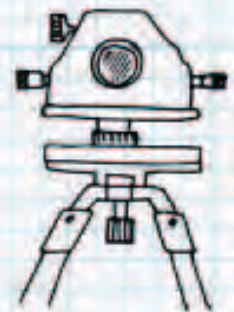
WWC ENGINEERING IS ACCEPTING APPLICATIONS FOR A SURVEYOR IN OUR SHERIDAN, WY OFFICE. THE CANDIDATE MUST HAVE EITHER WYOMING PLS CREDENTIALS OR AN LSIT ON TRACK FOR WYOMING LICENSURE. THE SURVEYOR WILL WORK UNDER THE DIRECT SUPERVISION OF LICENSED ENGINEERS AND SURVEYORS. TYPICAL DUTIES WOULD ENTAIL OVERSEEING AND PERFORMING BOUNDARY SURVEYS, ROW SURVEYS, STAKING OF OIL & GAS WELL LOCATIONS, AND PLAT PREPARATION. THE SUCCESSFUL CANDIDATE MUST BE PROFICIENT WITH TRIMBLE SURVEY EQUIPMENT AND TRIMBLE BUSINESS CENTER; POSSESS STRONG COMMUNICATION AND PROBLEM SOLVING SKILLS; EXHIBIT A HIGH ATTENTION TO DETAIL; AND WORK EFFICIENTLY IN A TEAM ENVIRONMENT. SPECIAL CONSIDERATION WILL BE GIVEN FOR EXPERIENCE WITH AUTOCAD CIVIL 3D AND/OR CIVIL 3D PLATFORMS. THE CANDIDATE WILL BE RESPONSIBLE FOR OVERSIGHT AND COORDINATION OF MULTIPLE SURVEY TECHNICIANS AS WELL AS PERFORMING INDEPENDENT SURVEYING ACTIVITIES. TRAVEL IS REQUIRED AND THE CANDIDATE MUST HAVE A VALID DRIVER'S LICENSE. WORK CONDITIONS ARE DEMANDING, BUT REWARDING.

COMPANY INFORMATION

WWC ENGINEERING IS A MID-SIZE, MULTI-DISCIPLINARY EMPLOYEE OWNED ENGINEERING FIRM THAT HAS BEEN SERVING THE ROCKY MOUNTAIN REGION SINCE 1980. OUR CULTURE IS ONE OF UNITY, COLLABORATION AND RESPECT WHICH AFFORDS A GREAT WORK ATMOSPHERE AND A COMMUNITY THAT STRIVES FOR MAINTAINING A HEALTHY WORK-LIFE BALANCE. WWC'S MAJOR SERVICE SECTORS INCLUDE CIVIL/SITE, ENVIRONMENTAL, LAND DEVELOPMENT, MINING, MUNICIPAL, OIL & GAS, PLANNING, ROADS/BRIDGES, SURVEYING, WATER/WASTEWATER AND WATER RESOURCES SERVICES. AS A PREFERRED EMPLOYER, WWC OFFERS ONE OF THE MOST COMPETITIVE SALARY AND BENEFIT PACKAGES AVAILABLE IN A FUN AND REWARDING WORK ENVIRONMENT.

OUR PERSONNEL RECEIVE A COMPETITIVE SALARY THAT ALSO INCLUDES PAID OVERTIME. BENEFITS INCLUDE HEALTH, DENTAL AND VISION INSURANCE, WITH THE OPTION FOR DEPENDENT COVERAGE. WE ALSO PROVIDE LIFE AND DISABILITY INSURANCE. THE COMPANY PROVIDES A 401K PROFIT SHARING PLAN, WITH A COMPANY MATCH OF 50% OF THE EMPLOYEE'S CONTRIBUTION UP TO A 5% MAXIMUM. WE ALSO OFFER PAID HOLIDAYS, VACATION, SICK LEAVE, COMPENSATION TIME, RELOCATION EXPENSES AND CONTINUED EDUCATION OPPORTUNITIES.

IF YOU QUALIFY AND ARE INTERESTED IN THIS CHALLENGING AND REWARDING CAREER OPPORTUNITY, PLEASE CONTACT CHAD REED AT (307) 673-0761 OR VIA E-MAIL: CREED@WWCENGINEERING.COM.



**SURVEYORS
HISTORICAL
SOCIETY**
presents



September 12-15, 2018
Astor Crowne Plaza
French Quarter
New Orleans, LA

SURVEYORS RENDEZVOUS 2018

Surveyors Historical Society has teamed up with Ralph Gipson (many of you will remember Ralph from the Bilby tower project), the local chapter of the Louisiana Society of Professional Land Surveyors, and other prominent local surveyors and historians to put on a "Rendezvous to Remember".

✿ New Orleans was founded in 1718 by Frenchman Jean-Baptiste Le Moyne, Sieur de Bienville, on high ground 100 miles from the mouth of the Mississippi River. The original city was centered around the Place d'Armes, which is now Jackson Square. After a hurricane destroyed most of the city in 1722, the streets were laid out and rebuilt in a military-style grid that defines today's French Quarter.

✿ You will have the opportunity to **celebrate 300 years of New Orleans history** through presentations, a field trip and visits to some special museums. We have lined up some great speakers who are passionate and knowledgeable about local surveying history. Our own Milton Denny will report on his project to monument the Initial Point of the St. Helena/Washington Meridians.



✿ Our conference hotel, the historic **Astor Crowne Plaza**, located on the corner of Bourbon and Canal Streets, is available to conference registrants for the unheard-of rate of \$105 per night. Bourbon Street and the French Quarter are literally at our doorstep! Across Canal St., walk or board a trolley to visit other attractions such as the World War II Museum and the Garden District. We have included ample **free time** to explore the city.

✿ Rendezvous 2018 will kick off Wednesday, September 12th with our traditional **Welcome Reception**. On Thursday, we'll have sessions at the hotel, with lunch included. Friday will begin with breakfast and a quick orientation at the hotel, followed by a field trip and demonstration of the French surveying instrument, the *compass*. In the afternoon, visit sites such as the Historic New Orleans Collection and the New Orleans Notarial Archives. Walk to the venues, or use the optional all-day City Sightseeing Hop-On/Hop-Off Bus. Rendezvous '18 will conclude with the fabulous **Saints and Sinners Ball**. (*Are you a Saint or a Sinner? Come dressed appropriately!*) New this year: We'll be doing a raffle instead of the usual auction. More time for "hospitality"!



✿ We've worked hard to keep registration costs as low as possible, so several meals will be "on your own". Hundreds of restaurants, from fast food to gourmet cuisine, are within easy walking distance of the hotel. (The famous "Breakfast at Brennan's" costs less than continental breakfast at the hotel. And beignets at the Café Du Monde are a New Orleans specialty not to be missed! Gather up some old (or new) friends, then hit "The Quarter" or come to the spacious Hospitality Room at the hotel. (So many restaurants, so little time.)

PROGRAM

WEDNESDAY, SEPTEMBER 12TH

- Board of Directors Meeting
- Welcome Reception
- Orientation
- Annual Membership Meeting
- Hospitality Room (after meeting)

THURSDAY, SEPTEMBER 13TH

- Breakfast on your own
- Morning Speakers
- Lunch at hotel (included)
- Afternoon Speakers
- Dinner on your own
- Hospitality Room

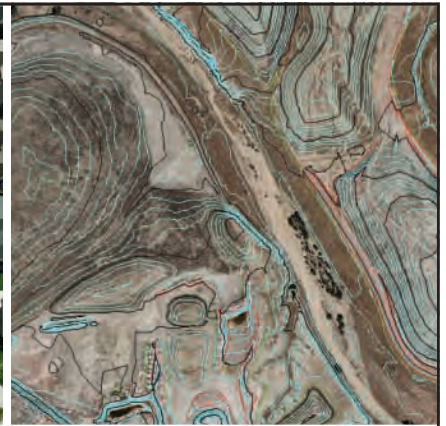
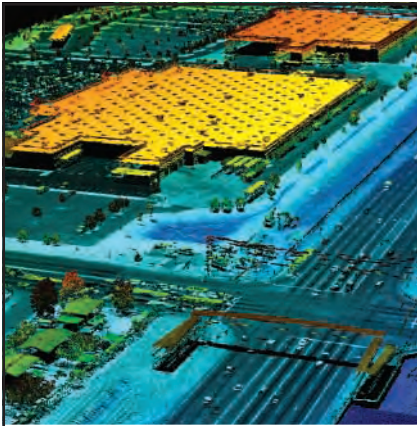
FRIDAY, SEPTEMBER 14TH

- Breakfast at hotel (included)
- Orientation
- Morning: Field Exercise

- Lunch on your own
- Afternoon:
 - Historic New Orleans Collection
 - New Orleans Notarial Archives
- **Saints and Sinners Ball** *Come dressed as a Saint or a Sinner, in period attire "normal" clothes.*
 - Cash Bar
 - Banquet
 - Raffle *Articles will be on display throughout Rendezvous. Buy your tickets and place them in the bags by the items of your choice.*
 - Hospitality Room (after the banquet)

SATURDAY, SEPTEMBER 15TH

- Optional Historic River Cruise aboard the **Creole Queen** (buffet lunch included)



■ Digital Aerial Photography ■ LIDAR ■ Mobile Mapping
 ■ Topographic Mapping ■ Orthorectified Imagery



40 West Oakland Avenue, Salt Lake City, UT 84115 · **PHONE:** 801-487-3273 · **FAX:** 801-487-3313



Call for Presentations

Wyoming Engineering Society 2019 Convention

The Wyoming Engineering Society Annual Convention is the Society's only membership event. It is the single annual opportunity where the Society membership gathers for continuing education opportunity, vendor interaction and product review, professional group meetings and social networking.

The Convention program is designed to have technical and educational components that meet the needs of the engineering profession. The program provides benefits to attendees on an educational and professional level and value to their employers by enhancing staff's technical, managerial and leadership skills.

A. Target Audience

The Convention target audience is the engineering profession across all disciplines (civil, mechanical, electrical, structural, etc.) and levels of experience, with emphasis on the profession in Wyoming. The surveying profession is also a participant; however, survey track presentations are not solicited through this call for presentations. Rather, those wishing to present on technical survey topics should contact the Professional Land Surveyors of Wyoming organization (PLSW.org)

B. Convention Topics

The program topics cover seven key areas (See attached Table A). Each topic has a set of sub-topics that define presentation opportunities within these broad topic areas. Prospective presenters should select the topic area for the general subject and the specific sub-topic to describe the presentation.

- 1 State of the Industry
- 2 Professional Development
- 3 Multi-disciplinary Technical
- 4 Natural and Man-made Disasters
- 5 History & Heritage and Significant Projects
- 6 Strategic Issues / Public Policy
- 7 Vendor Products and Services

C. Convention Program and Sessions

1. Program sessions are scheduled throughout the Convention from February 6, 2019 through February 8, 2019 between 8:00 a.m. and 5:00 p.m.

2. Authors may submit a full or partial session idea and the Technical Program subcommittee will work with the submitting author(s) to merge similar ideas within a category to create a session. Sessions may be either Concurrent (most common), roundtable, or panel discussions.
3. Submitting a proposal to the Convention constitutes an agreement that, if your proposal is accepted, the author(s) will register for the Convention (as a Presenter at no cost), attend the Convention, and present their work in person.
4. WES provides no stipend, travel, or lodging for presenters. Presenters, with the no cost conference registration, do receive conference meals and may attend sessions and social functions at no cost.

D. Submission Information

1. Submit presentation proposals electronically or directly to the Vice President of WES
–Murray Schroeder at mschroeder@wwcengineering.com.
2. Include presenters full name, telephone number and email address.
3. Proposal must be free of personal/corporate-specific marketing, except for those presenting under Topic 7.
4. Both the main topic and a sub-topic must be identified to be considered.
5. Program Abstract (100-200 words): Describe the session topic and its relevance to the Convention and participants, what the attendees will take away from the session and how the presentation will be conducted (e.g., lecture style, roundtable discussion, panel discussion, etc.). Provide enough detail to convey all of the aspects of the topic the speakers intend to discuss in a session.
6. Session Format: Describe proposed format for how the session will be conducted – including the number of speakers, anticipated manner of audience participation, and other similarly related information.

PLSW FIELD BOOKS AVAILABLE

Embossed with the PLSW logo on the cover

Only \$10.00 each

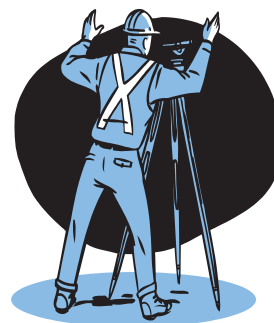
Available in Orange or Yellow



PLSW, SE Chapter % Larry T. Perry L.S.
1127 Terry Ranch Road
CHEYENNE, WYOMING 82007

ATTENTION!

SAFETY MANUAL FOR SURVEYORS



NOW AVAILABLE FROM THE SW CHAPTER
OF PROFESSIONAL LAND SURVEYORS OF
WYOMING

COMPREHENSIVE, AFFORDABLE, ADAPTABLE!
Special Offer - Only \$50 + \$2 SHIPPING!

CD CONTAINS ENTIRE 206 PAGE MANUAL IN BOTH
 "WORD" AND ADOBE ".pdf" FORMATS THAT CAN BE
 EDITED AND ADAPTED FOR YOUR PARTICULAR USE

Contact Secretary/Treasurer: Olian T. Shockley
 Olian_Shockley@msn.com or phone 307-875-0146



STAKE YOUR TERRITORY

SURV-KAP®

QUALITY SURVEY MARKERS, CAPS, MONUMENTS
AND ACCESSORIES SINCE 1972

SURV-KAP.COM | 800-445-5320

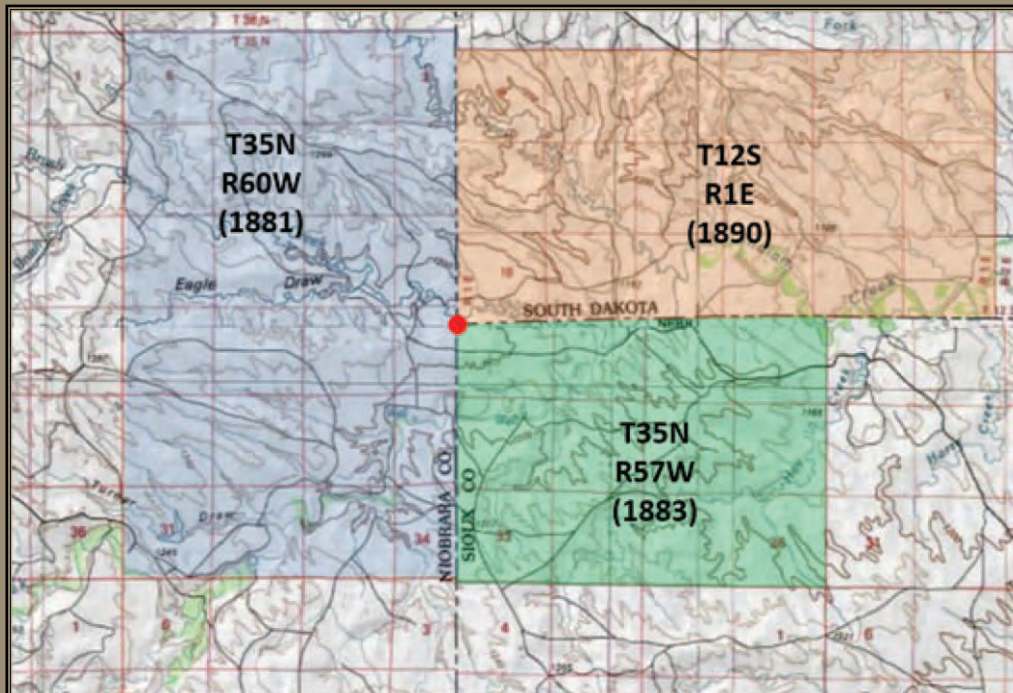
ORDER ONLINE TODAY!

Wyoming / Nebraska-South Dakota Common Corner Rededication

June 9, 2018

The Common Corner site was originally dedicated on September 6, 1989, by surveyors from surrounding states. The original plaque and fence had come into disrepair, prompting interested surveyors from the three common states to gather at the site on June 9, 2018, and to place a new plaque and do necessary repairs at the site.

TOWNSHIPS IN EACH STATE THAT MEET AT THE COMMON CORNER



The three fractional townships that connect at the Common Corner are T35N-R60W of the 6th PM (Wyoming 1881); T35N-R57W of the 6th PM (Nebraska 1883); and T12S-R1E of the BHM (South Dakota 1890).

Since the fractional township in Wyoming was surveyed first and because of convergency, Ranges 58 and 59 West of the 6th PM do not exist at this location.



THE COMPLETED PROJECT

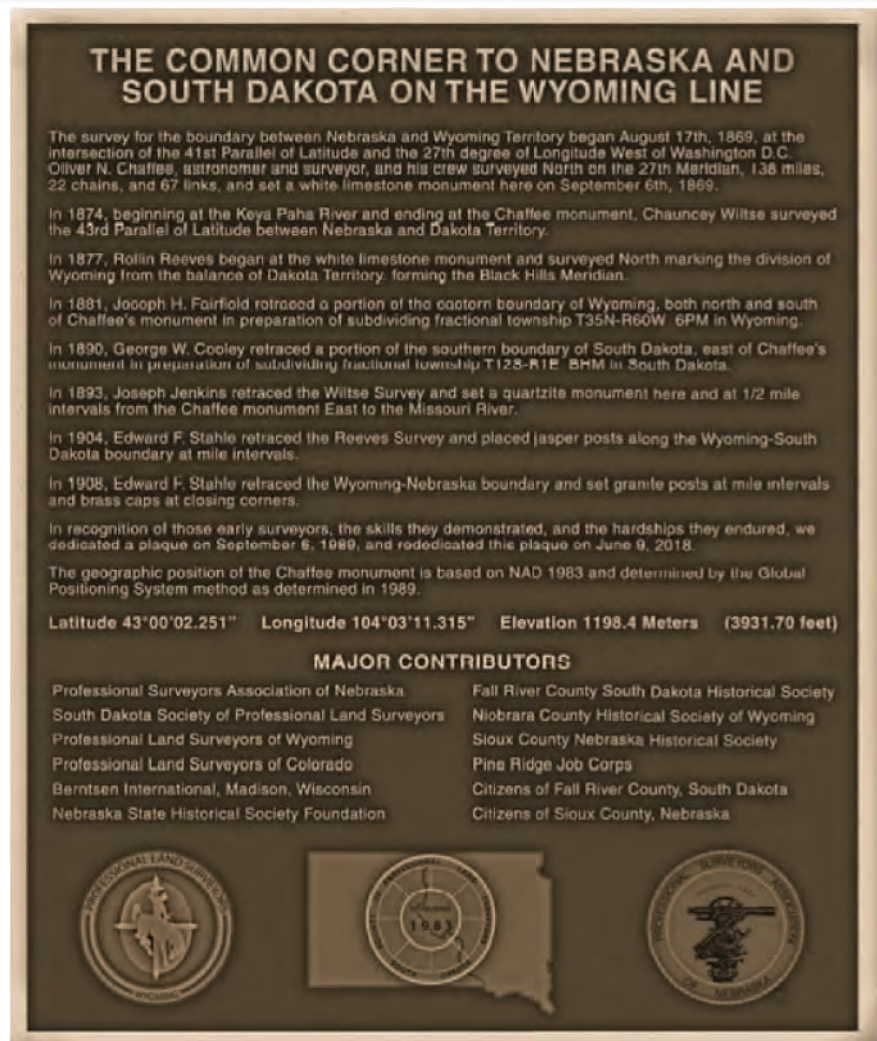


LAND SURVEYORS REPRESENTING THE THREE STATES: JOHN LEE - WYOMING,
STEVE PETERS - SOUTH DAKOTA AND CASEY SHERLOCK - NEBRASKA.

A group of Land Surveyors from Nebraska, Wyoming and South Dakota got together on Saturday, June 9th and spent the day rehabilitating and rededicating the corner common to the three states. The group met in Crawford, Nebraska at 9:00 a.m. and carpooled out to the site, arriving around 11:00. After a short discussion on what needed to be done the group went to work. The items that needed most attention were the chain-link fence surrounding the site, which was straightened and reinforced with additional posts, and the original plaque, which was replaced with a more durable bronze plaque.

After the work was complete Nebraska surveyors Gene Thomsen and Jerry Penry recounted the history of the two monuments located at the corner, along with the surveys which had taken place along the boundaries between the three states. Next, pictures were taken and afterwards the group spent some time searching for an additional monument which was set in 1883 by George W. Fairfield approximately 6 chs. to the north. Unfortunately the location fell in a large drainage that was prone to flooding and was not located.

INSTALLATION OF THE NEW PLAQUE.



Combine and Conquer. RDO does that.



eBee
senseFly

RDO Integrated Controls features Hybrid Positioning Systems that perform faster in the field than stand-alone robotic systems, with more versatility than RTK-only solutions. A true upgrade, our Hybrid Positioning technology combines GNSS positioning and optical robotic measurements, on one rover pole.

- Faster field work than stand-alone robotic/GNSS solutions
- Combination of fully robotic system with lightweight GNSS receiver
- Hybrid Lock for rapid prism acquisition in dense areas
- Hybrid Switch with single screen tap to bounce between optical and GNSS measurements
- Hybrid Resection to start production at locations that are safe and convenient
- Compatible with all Topcon robotic total station systems



Topcon Falcon 8



Drone Loaner Program:

Check out our used loaner fleet of UAVs at a discounted rate.



877-90 RDOIC
www.rdoic.com



CORNER MONUMENTS - ORIGINAL 1874 CHAFFEE MONUMENT
ON THE RIGHT, 1893 JENKINS MONUMENT ON THE LEFT.



CHAFFEE'S DESCRIPTION OF 1869

The point is commemorated by a white limestone monument 5½ ft. long 1 ft. square for one ft. from the top down, and below of an octogonal shape. It is inscribed on the North side "27° W. L."; on the East face "43° N. L."; on the South face, "138 M. 22 ch. 67 lks." on the west face "Wyoming". It is surrounded by a mound of earth and stone 7 ft. in diameter at its base, 6 ft. in diameter at the top and 3½ ft. high. It stands in a small broken hollow, without any natural objects available for witnesses and nothing striking to the attention. The surface raises toward the N. E. & W. and furnishes nothing which would attract attention, or furnish materials for a sketch.

(Other monuments placed along the Nebraska-Wyoming border were square cottonwood posts in earth mounds with pits.)



The group headed back to Crawford, arriving around 5:00 p.m. That evening the group met at John Lee's Campsite in Fort Robinson State Park for a few refreshments.



Group Picture, left to right: Jerry Penry, Steve Peters, Don Brush, Casey Sherlock, Rex Heiden, Gene Thomsen, Carl Gilbert, Bailie Gilbert, John Lee, Joel Ebner, Jeremy Davis, Dick Kohler, Ryan Lorenzen.

WILTSE'S DESCRIPTION OF 1874

Intersected the 27° of Longitude West from Washington. My convergency N. to true line from this point will be 27 chains and 43 links, but in measuring North intersect the North West Corner as established by Mr. Chaffee, at 22 chains and 13 links, showing my intersection to be 5 chains and 31 links North of the true North West Corner of the State of Nebraska.

I adopted Mr. Chaffee's corner as correct and corrected my line to correspond therewith.

Note. I found the Stone monument which Mr. Chaffee placed at the N.W. Corner of the state lying on the ground. The mound that was placed around it had been removed or torn down on the east side so as to let the stone fall in that direction. I re-erected the monument and re-built the mound.

**JENKIN'S DESCRIPTION OF 1893**

Set a quartzite monument 7 feet long, 10 inches sq., 3 ½ feet in the ground for the Terminal Monument. Marked 1893 T. Mon., 224 M, 12.13 C. on East side.

By N/WYO on south side.

By WYO/S.D. on north side and WYO. on west side and placed the Northwest corner of the old monument against the Southeast corner of the new Terminal Monument. Sept. 16th, 1893.

**CORNER MONUMENTS - ORIGINAL 1874 CHAFFEE MONUMENT
ON THE LEFT, 1893 JENKINS MONUMENT ON THE RIGHT.**



**CORNER MONUMENTS - ORIGINAL 1874 CHAFFEE MONUMENT
ON THE RIGHT, 1893 JENKINS MONUMENT ON THE LEFT.**

Wyoming surveyor dies at 107

By BRYAN CLARK
bclark@postregister.com

Lloyd Baker, then 101, talks about his life as a surveyor during a 2013 interview at his office in Etna, Wyo. Baker, who died Monday at age 107, worked nearly until the day of his death.

Wyoming surveyor Lloyd Baker, a fixture at singles dances in Idaho Falls, died Monday at age 107. He was, according to some sources, the oldest man in the Cowboy State.

Baker worked nearly until the day of his death, according to Elcie Baker Walker, Baker's 88-year-old sister. He did not stick to the office, doing field surveying work instead while an assistant managed the clerical work.

"He was always a worker," she said.

Asked if she ever discussed the possibility of retirement with her older brother, Walker replied: "I wouldn't have dared."

Baker's long life took him many places. He spent

many years in California, Walker said. He taught for a time in Boise.

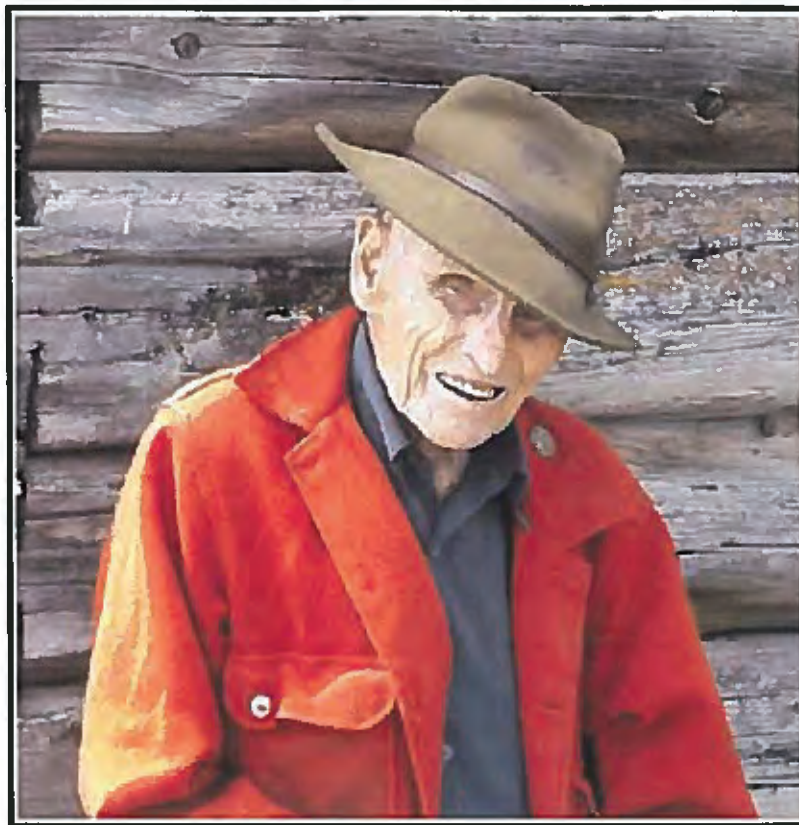
Baker was a noted presence at Mormon adult dances for singles for decades, telling a Post Register reporter in 2013 that his goal was to dance with as many "pretty ladies" as he could.

"He danced with all the women," Walker said.

Baker attributed his long life to his unusual diet — eating large amounts of butter and salt, avoiding homogenized milk, bleached flour and white sugar. He also said in 2013 that exercise was as likely to kill you as help you, and that hospitals were to be avoided because they were places people went to die.

Walker pointed out that the Baker family is generally long-lived. Many of her brothers, uncles and other relatives lived into their 90s, though none as long as Baker.

"I guess we're supposed to be oldies," she said.



Lloyd Braley Baker
1911 - 2018



Wyoming man drives to 104th birthday party

By Michael H. O'Donnell
 modonnell@journalnet.com
 May 24, 2015

Just showing up for your birthday when you're a 104 is quite an accomplishment. Driving from Star Valley, Wyoming, to Pocatello to shake hands is incredible. That's what Lloyd Baker did last week.

He jumped in his 1996 Honda manual shift car and drove the entire distance. By the way, Baker also works about 30 hours a week at his surveying business in Wyoming, Lloyd B. Baker & Associates, LLC.

"Retirement is for old people and I don't plan to get that way," Baker said as he prepared to have a slice of birthday cake at the Museum of Clean last week.

Lloyd keeps a pocket full of M&Ms with him at all times and gives them credit for part of his longevity. He also said it's important to eat natural salt and drink plenty of water.

"Everything we excrete has salt in it," Lloyd said.

His youngest sister, Elsie Walker, 85, of Afton, Wyoming, was on hand to slice the cake.

She said the family home in Star Valley was built in 1888 by her grandmother and it was the first home with a wood floor and shake shingle roof.

"She spent a winter in a tent and an overturned wagon and she decided she didn't want to spend another winter in a tent," Walker said about her grandmother.

Lloyd was one of nine children born to his parents and he said there was 14 inches of snow on the ground when he came into the world. Most of those children have lived into their 90s.

"It took two days for my father to come see me when I was born," Lloyd recalled.

He took an interest in engineering early in his life and graduated with a degree in civil engineering from the University of Wyoming in Laramie in 1940. His early career was with Bechtel Corp. where he did projects like laying out railroad tracks near San Francisco. That escalated into being responsible for nuclear power plants in Massachusetts and Connecticut.

He returned to Wyoming in 1973.

"I grew up on a small milk farm in Star Valley," Lloyd said. "We milked cows before and after school."

He attended a three-room elementary school in Etna, Wyoming and that where he developed his love of learning. He also loved baseball as he moved up to high school.

Lloyd became the team's pitcher.

"We played the best team in Star Valley and held them to one hit," Lloyd recalled.

Success and longevity is not limited to Lloyd. His brother Wayne Baker, 91, and Dick Casull founded Freedom Arms in Freedom, Wyoming, back in 1978. The company started with mini-revolvers and has grown to produce the .454-caliber Casull revolver.

Lloyd's nephew and president of Freedom Arms today, Bob Baker said his uncle is

incredible during last week's birthday party attended by family and friends from Wyoming, Utah and Idaho.

"He doesn't quit," Bob said.

Lloyd had a simple explanation for his more than a century on the planet.

"The more good I can do with my body, the longer the Lord's going to leave me here," Lloyd said.



Custom Survey Markers & Monuments • Signs & Witness Posts • Flagging & Targets • Nails & Washers

SURVEY MARKING

Custom Survey Markers & Monuments • Signs & Witness Posts • Flagging & Targets • Nails & Washers



Bernt'sen[®]

Marking the Infrastructure of the World™

877-686-8561 | www.berntsen.com



Sundance Unmanned Aerial Systems



UAV mapping services for oil and gas, construction planning, inspection and progress mapping

High resolution orthophotos and digital elevation maps

UAV flight and software training



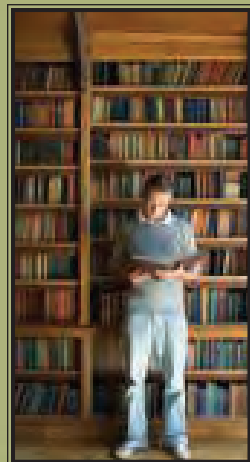
Dave Spurlock
307-330-7777
survey@wyoming.com

FREE MONEY AVAILABLE!!!

APPLY NOW FOR A PLSW SCHOLARSHIP

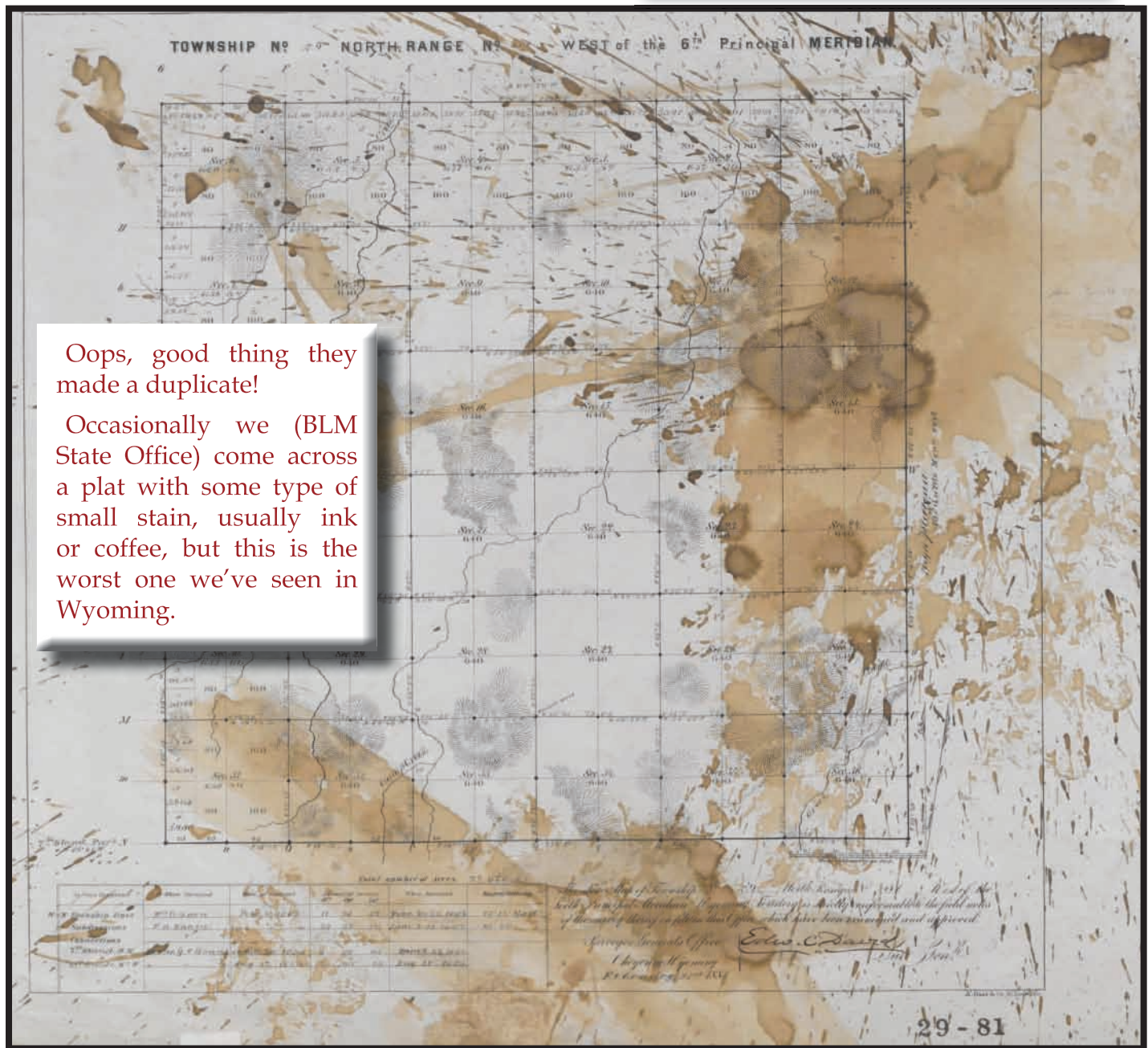
If you are attending college with the intent of pursuing a career in Land Surveying in Wyoming, we want to give you money!

A Scholarship Application is available on our website
<http://www.plsw.org>



This picture was taken during a hands-on lesson presented to 28 fifth grade students at Bain Elementary in Cheyenne on March 21, 2018. The lesson was presented to the students by John Lee and Joel Ebner in conjunction with Wyoming Land Surveyor's Week.

STAINED PLAT



Oops, good thing they made a duplicate!

Occasionally we (BLM State Office) come across a plat with some type of small stain, usually ink or coffee, but this is the worst one we've seen in Wyoming.

SCHERBEL ON SURVEYING



A compilation of parts of the
WYOMING STATUTES
and other items of interest to
PROFESSIONAL LAND SURVEYORS

Order from SURVEYOR SCHERBEL, LTD.

Box 96, Big Piney – Marbleton, Wyoming 83113

\$60.00 postpaid

Revised and updated: July 2016

SURVEY SUPPLY SERVICE COMPANY



MANUFACTURER CUSTOM

SURVEY STAKES, LATH, & BRASS CAPS

FLAGGING - PIN FLAGS - FLUORESCENT PAINT

ROB SHOOK

P.O. Box 51227

Casper, WY 82605-1227

307-234-9856

COMPLETE FIELD SUPPLIES SINCE 1969



How You Measure Matters Introducing the Trimble TSC7 Controller



We want to help you, ***BE IN CONTROL!***

Want More Information? Contact:
Jason Dysthe, Geospatial Sales Representative
5480 West 60th Avenue, Unit A | Arvada, CO 80003
jasond@frontierprecision.com
720.214.3500 or 800.652.1522 [Toll Free]
720.214.3503 [Fax]

Redesigned from the ground up, the powerful Trimble® TSC7 controller features the latest version of our field software and a more powerful processor that makes quick work of large projects and handles 3D data visualization and manipulation with ease.



Frontier Precision,
Proudly Celebrating
30 Years! 1988-2018
AN EMPLOYEE-OWNED COMPANY

- >> Large 7" Touchscreen
- >> Windows 10 Operating System
- >> Military-Grade Rugged Design

WWW.FRONTIERPRECISION.COM

LINES AND POINTS

P.O. BOX 8

CHEYENNE, WY 82003



Please Recycle

Transportation

Permitting

Western
Research & Development, Ltd.

Land Development

Planning

Surveying — Civil Engineering — Planning

- **Land Surveying / Right-of-Way**

WRD's Survey Department is managed by Professional Land Surveyors licensed in multiple states.

- **Water Resources**

WRD has wide-ranging experience performing hydrologic and hydraulic engineering as well as water rights research.

- **Transportation / Utility Design**

From traffic engineering and signal design to water and wastewater system design, WRD's civil engineers can to it all.

- **Construction Inspection**

The WRD team has over 20 years of experience providing construction inspection services.



Tel (307) 632-5656

5908 Yellowstone Rd, Cheyenne, WY

www.wrd-ltd.com